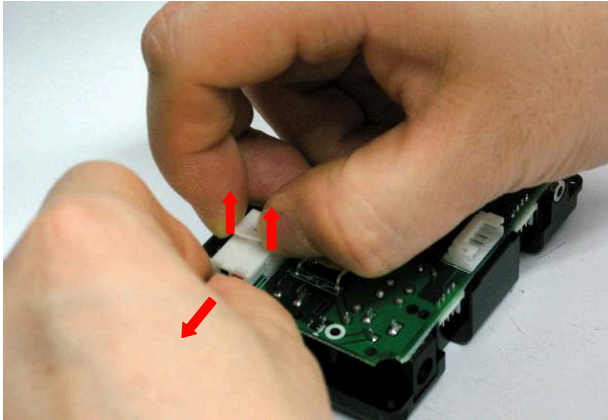


## ■ Install the other Bluetooth Board inside the Control Box

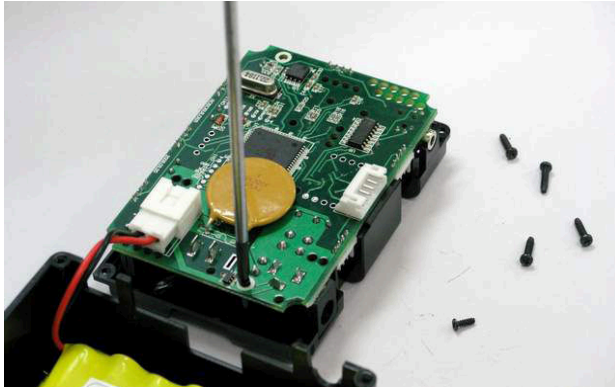
step1. Unscrew and remove the four screws on the corners of the RBC control box.



step 2. Remove the rear plastic cover and separate the battery connector.



step 3. Unscrew and remove the two screws holding the circuit board to the front cover.

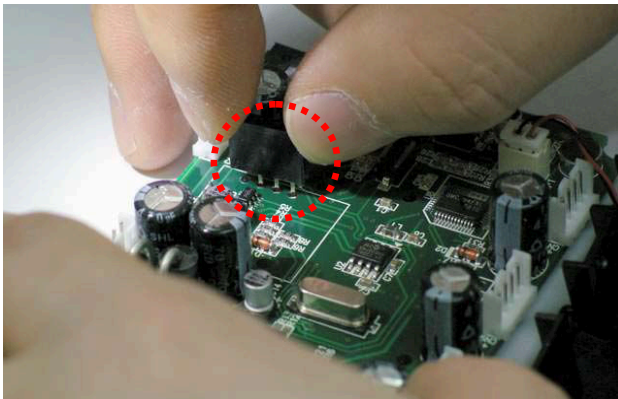


step 4. Separate and turn over the circuit board.

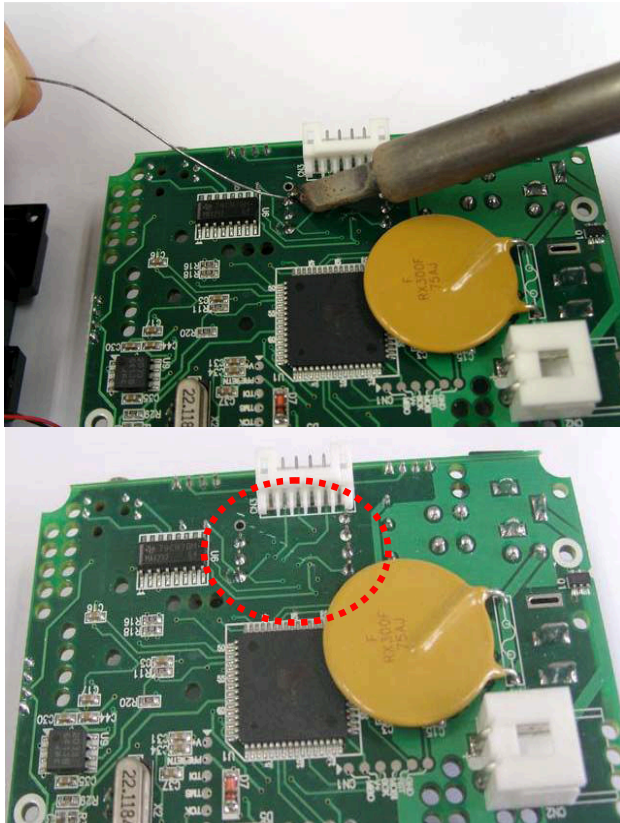
Insert the two sockets to prepare for the installation of the bluetooth board.

There are one 3-pin socket and one 4-pin socket included in the kit.

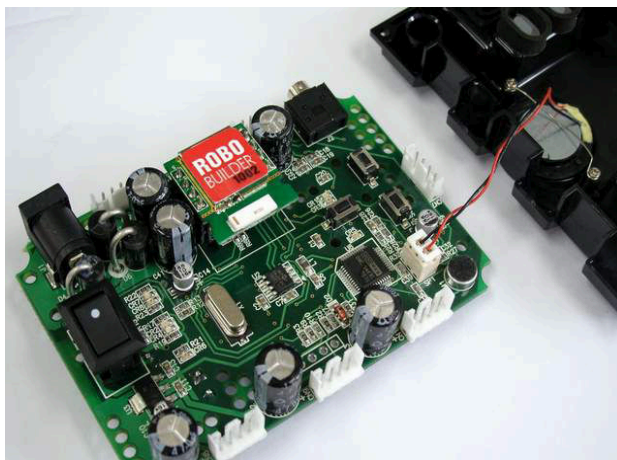
The 3-pin socket is inserted as shown below (be cautious about its position and direction).



step 5. Turn over the circuit board and solder the seven pins of the two sockets.



step 6. Install the bluetooth board on the two sockets as shown below (be cautious about its direction).



step 7. Assemble the RBC control box to complete the installation. Follow the steps 3, 2, and 1 reversely.