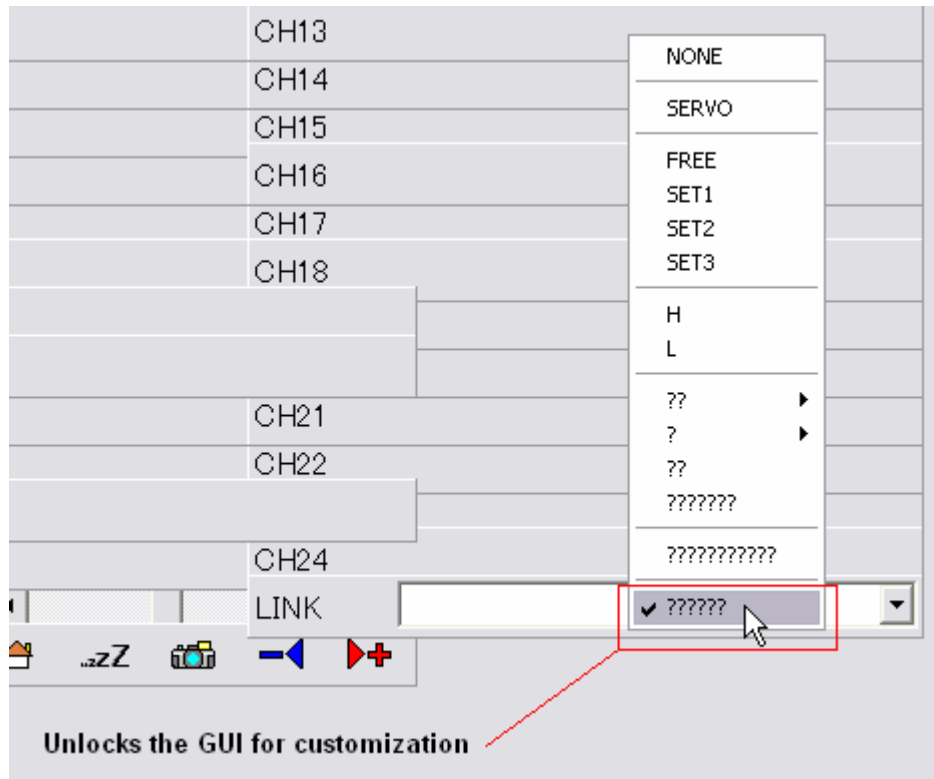
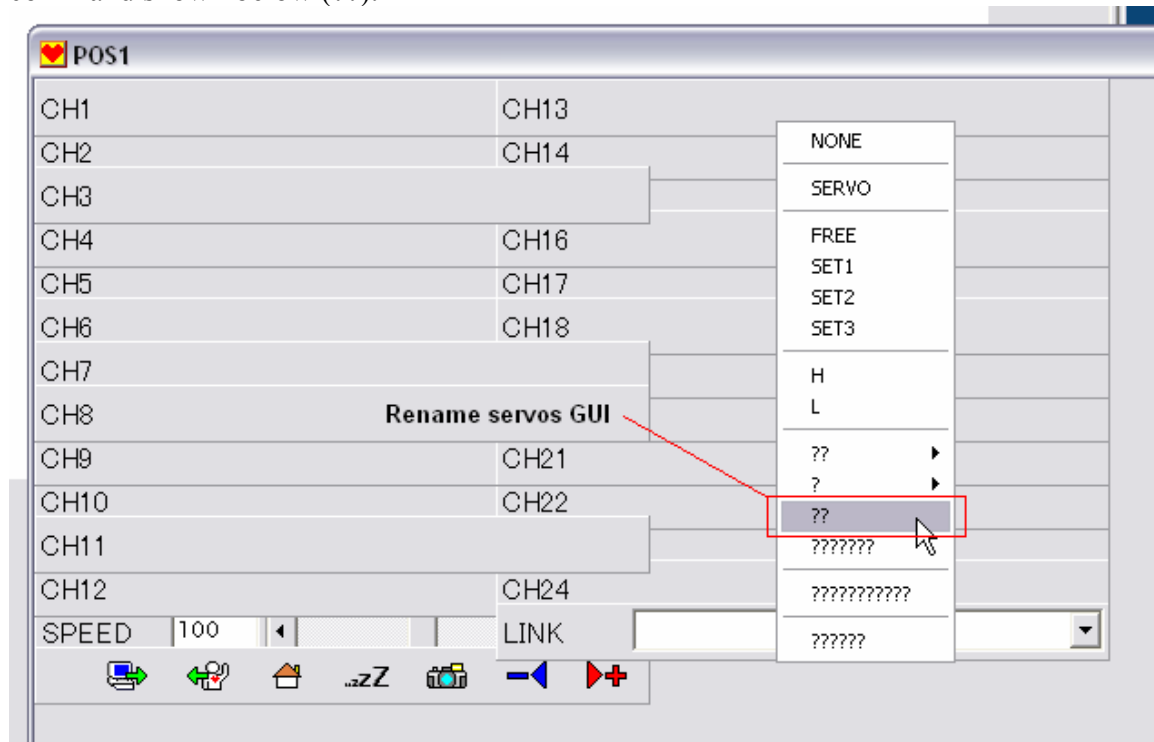


KHR-2HV - Heart-to-Heart v3.0 POS window customizations:

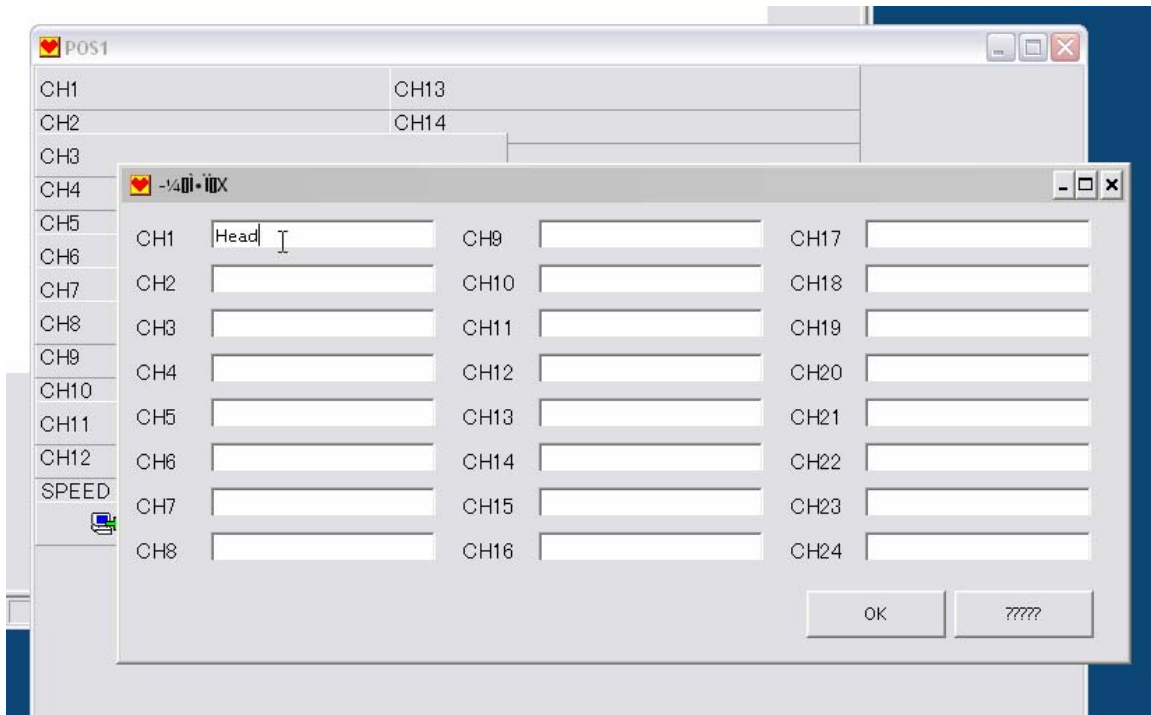
To unlock the GUI for customization, right-click on one of the channel boxes and select the last command (?????) shown below. When unchecked, you are allowed to move the channel boxes around the window...woohoo...FREEDOM!!!



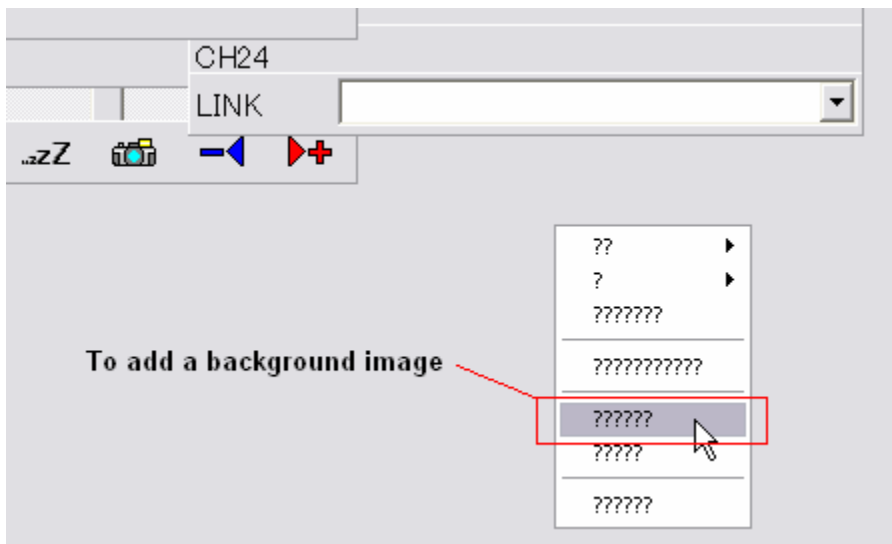
To get to the servo channel rename GUI, right-click on one of the channels and select the command shown below (??).



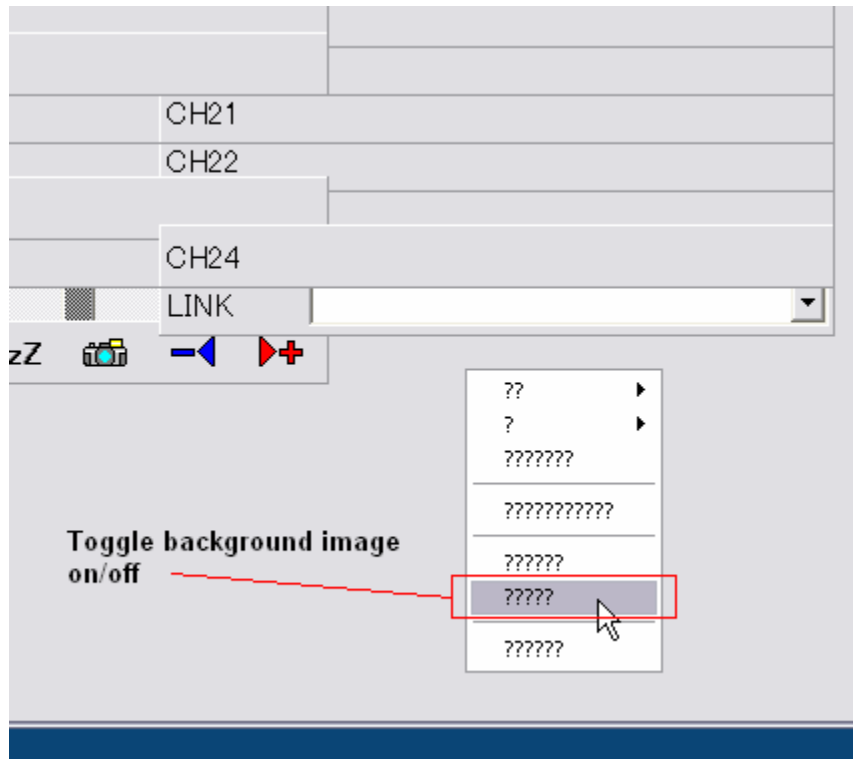
The servo channel rename GUI is shown below. Fill out as needed.



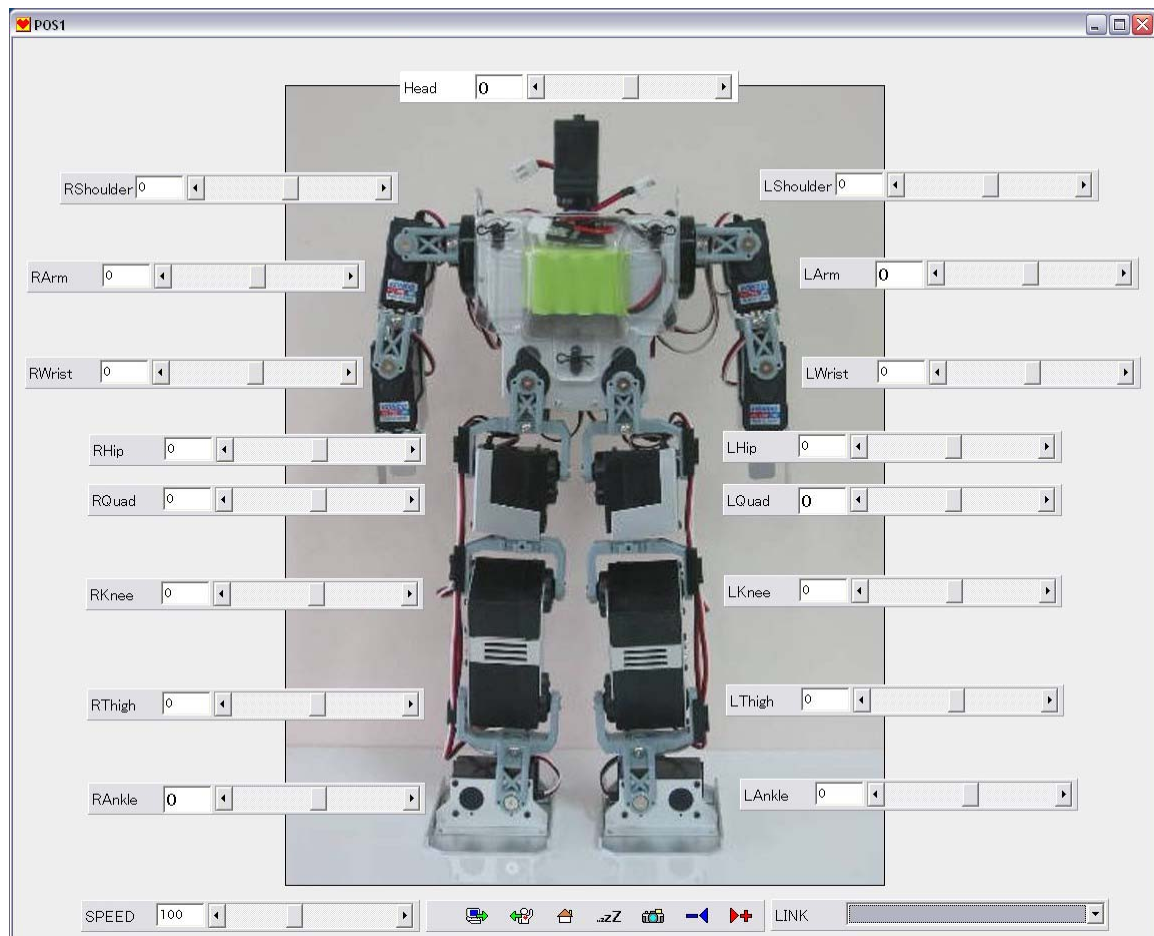
If you want to add a background image in the POS window, right-click in the area away from the channel buttons (empty area) and select the command below (???????). A file dialog will appear, just select your image and viola! Are you having fun yet?



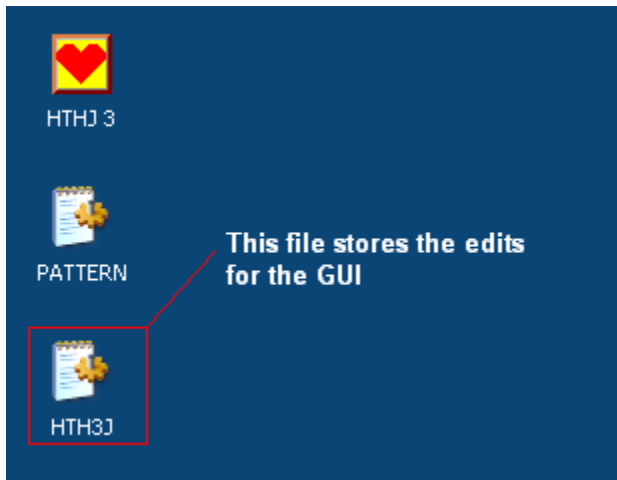
The command below the “add Background image” shown below (?????) will toggle the background on/off.



Here is what is possible...



If you want to know where your customizations are stored, look at your desktop.



It's a good idea to back this file up somewhere unless you want to do it over again.

If you have any edits to this doc that you would like to include, please PM me at the robosavvy site (RRDIAZ30).

Regards,

Rick Diaz